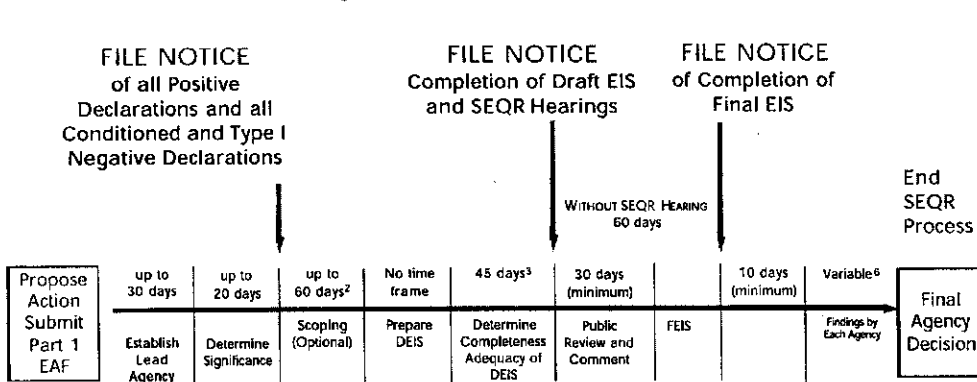
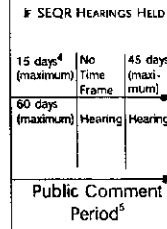


SEQR TIME FRAMES¹



Footnotes

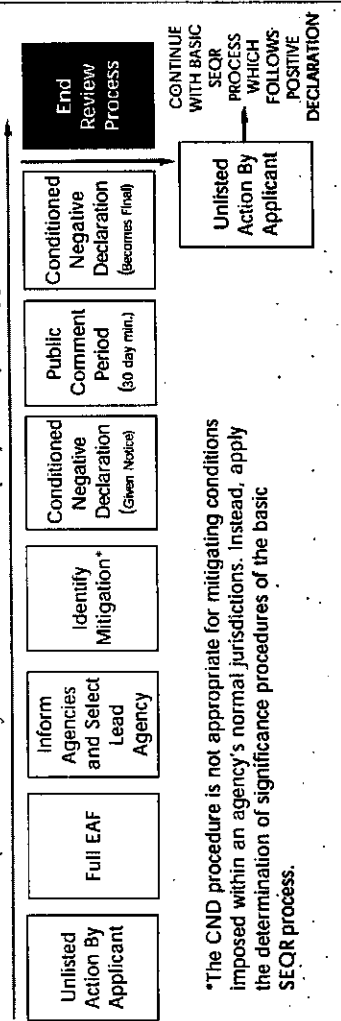
- All time frames may be extended by mutual consent of involved parties.
- Time clock starts with submission of draft scope by applicant
- Thirty days resubmitted DEIS
- Publish hearing in general circulation newspaper at least 14 days before a public hearing. The hearing may commence on the 15th day.
- Public comment must remain open until 10 days after the close of hearing.
- When applicant is involved, lead agency findings and decisions must be made within 30 days of filing the FEIS; otherwise, findings not required until an agency must make a decision on final action.



SEQR FLOW CHART 2003

CONDITIONED NEGATIVE DECLARATION (CND) PROCESS

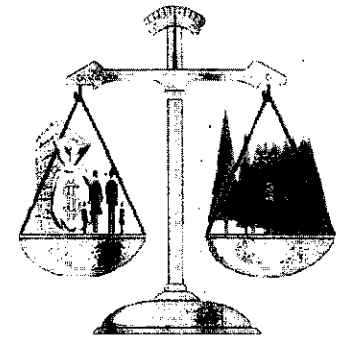
(Possible only for Unlisted Actions proposed by an applicant)



*The CND procedure is not appropriate for mitigating conditions imposed within an agency's normal jurisdictions. Instead, apply the determination of significance procedures of the basic SEQR process.



SEQR FLOW CHART AND TIME FRAMES

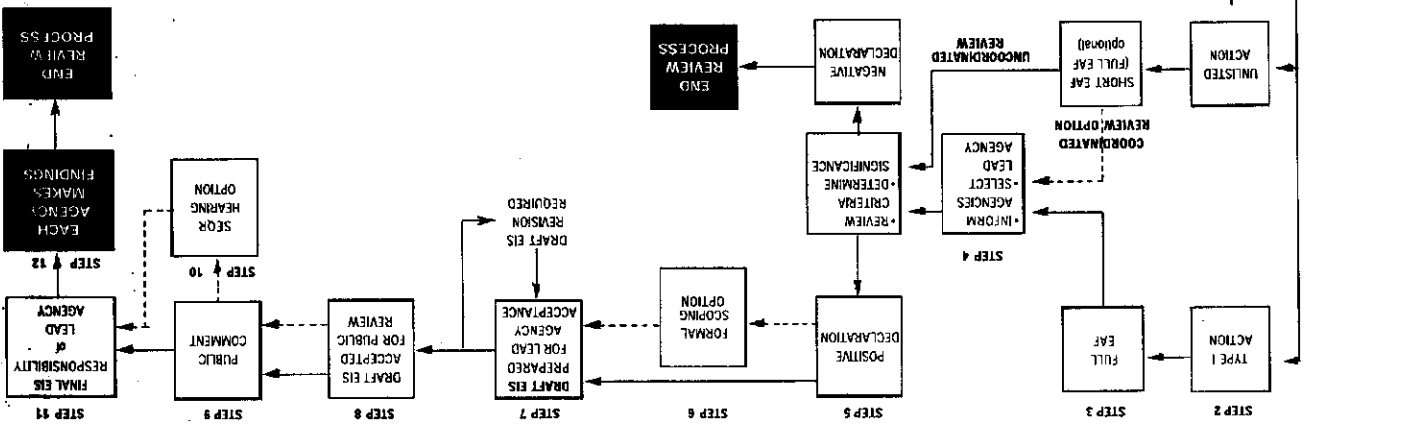


New York State
Department of Environmental Conservation
Division of Environmental Permits

Basic SEQR Process

The Division of Environmental Permits central and regional offices listed on the next panel can answer questions and provide you with information to help you learn about SEQR processes and requirements. These references are available:

- The statewide SEQR regulations, 6 NYCRR Part 617 (the latest revision effective July 12, 2000)
- The SEQR Cookbook—a step-by-step discussion of the basic SEQR process
- Applicant's Guide to SEQR
- Citizen's Guide to SEQR
- Local Official's Guide to SEQR
- DEC SEQR website: www.dec.ny.gov/public/357.html



Region 1 (Nassau, Suffolk counties)
 Building 40, SUNY at Stony Brook
 Stony Brook, NY 11790-2356 (631) 444-0359
 Fax (631) 444-0360
 Region 2 (all of New York City)
 One Hunters Point Plaza, 47-40 21st Street
 Long Island City, NY 11101-5407 (718) 482-4997
 Fax (718) 482-4975
 Region 3 (Dutchess, Orange, Putnam, Rockland, Sullivan, Ulster, Westchester counties)
 21 South Pitt Corners Road
 New Paltz, NY 12561-1696 (845) 256-3054
 Fax (845) 256-3042
 Region 4 (Albany, Columbia, Delaware, Greene, Montgomery, Otsego, Rensselaer, Schoenectady, Schenectady, Warren, Washington counties)
 1150 North Westcott Road
 Schenectady, NY 12306-2014 (518) 357-2069
 Fax (518) 357-2460
 Region 5 (Clinton, Essex, Franklin, Fulton, Hamilton, Saratoga, Warren, Washington counties)
 Route 86, PO Box 296
 Ray Brook, NY 12977-0296 (518) 897-1234
 Fax (518) 897-1394
 Region 6 (Herkimer, Jefferson, Lewis, Oneida, St. Lawrence counties)
 State Office Building, 317 Washington Street
 Watertown, NY 13601-3787 (315) 785-2245
 Fax (315) 785-2242
 Region 7 (Broome, Cayuga, Chenango, Cortland, Madison, Oneida, Oswego, Tioga, Tompkins counties)
 615 Erie Boulevard West
 Syracuse, NY 13204-2400 (315) 426-7438
 Fax (315) 426-7425
 Region 8 (Chemung, Genesee, Livingston, Monroe, Ontario, Orleans, Schuyler, Seneca, Steuben, Wayne, Yates counties)
 6274 East Avon-Lima Road
 Avon, NY 14414-9519 (585) 226-2466
 Fax (585) 226-2830
 Region 9 (Allegany, Cattaraugus, Chautauqua, Erie, Niagara, Wyoming counties)
 270 Michigan Avenue
 Buffalo, NY 14203-2999 (716) 851-7165
 Fax (716) 851-7168
 Central Office, Environmental Permits
 625 Broadway 4th Floor
 Albany, NY 12233-1750
 Fax (518) 402-9167 Fax (518) 402-9168